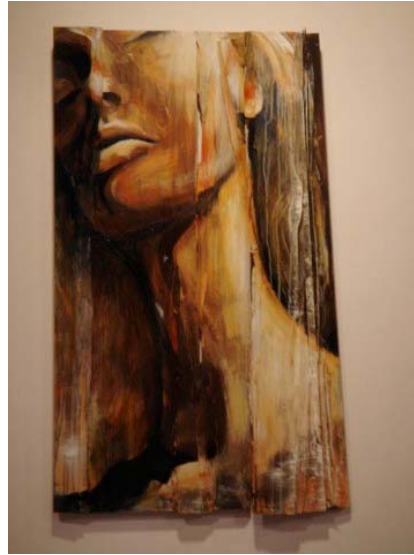


CHEESE + CRACKERS, GIN + TONIC, AND NOW...ART + VISION

Spex presents ART+VISION with the mixed media work of Misa Verbeek

FOR IMMEDIATE RELEASE – August 8, 2008 - Chicago, IL – Spex, Lincoln Park’s destination for luxury eyewear and sunwear, holds an ART+VISION event with mixed media artist Misa Verbeek. The reception takes place on Wednesday, September 24 from 5-8 pm, at 2316 N. Clark St., Chicago, IL 60614; 773-404-0777; spexchicago.com. The show will run through October 29, 2008. Drinks & hors d’oeuvres will be served. The event is sponsored by Chicago Magazine and Lafont eyewear.

Through ART+VISION, Spex seeks to provide local talent a diverse and receptive audience within the context of a unique retail environment. Spex has always believed in the importance of encouraging the talent that drives all creative endeavors. These well-attended shows are largely due to local creatives who are given a platform for exposure and community connection. Optician Debbi Yambrick says, “Misa’s work is a really intriguing mix of materials and subject matter. Visually her work fits in perfectly with the eyewear we have in our store and we couldn’t be more excited to bring in an emerging artist in support of Chicago’s freshest talent.”



Misa Verbeek is native of the Czech Republic. She emigrated to the United States in 2000 to pursue her love of art. Subsequently, she opened Foundry Metal Art Gallery in Chicago’s West Loop. Misa began producing very unique pieces using stainless steel and copper. By combining acrylic on canvas with welded stainless steel and copper, she arrived at her own signature style, which captured and expressed her own personal aesthetic. Her sophisticated use of color, the polished rendering of the human body and her flare for powerful composition embodies that which has become a truly unique voice in visual art. She has shown work at Gallerie Marchetti, Parts Unknown Gallery, Landmark Art Gallery, and at her own Foundry Metal Art Gallery. For more information on the artist, visit misa-artwork.com.

Spex offers artfully crafted eyewear and sun wear to a stylish and discerning public with an eye for beauty and function. Their services range from contact lens fittings and eye exams to eyewear styling and repairs. Product lines are frequently updated, while attentive and knowledgeable customer service rounds out the experience for the savvy shopper. Dr. Lindsay Luker, specializing in primary eye care, is the in-house optometrist and encourages all customers to come in for a comprehensive eye exam. Most major medical and routine vision insurances are accepted.

Media Contact: Marilyn Frank, Tel: 847-905-1410, x 26; Email: marilyn.frank@spexchicago.com

#